

# *polylac*

**gizir**<sup>®</sup>  
WOOD PRODUCTS



*excellent*  
*scratch resistance*

• EN



No trees  
have been cut  
for this catalogue.

exclusive / ecological / resistant

**WORLDWIDE  
IN OVER**

**7**   
**COUNTRIES**

 **RELIABILITY**

Reliability is the overall brand promise at Gizir. In fact, it is our most important commitment to our costumers.

 **QUALITY**

We, at Gizir, strive to provide our customers with products and services that meet & even exceed their expectations.

 **DESIGN**

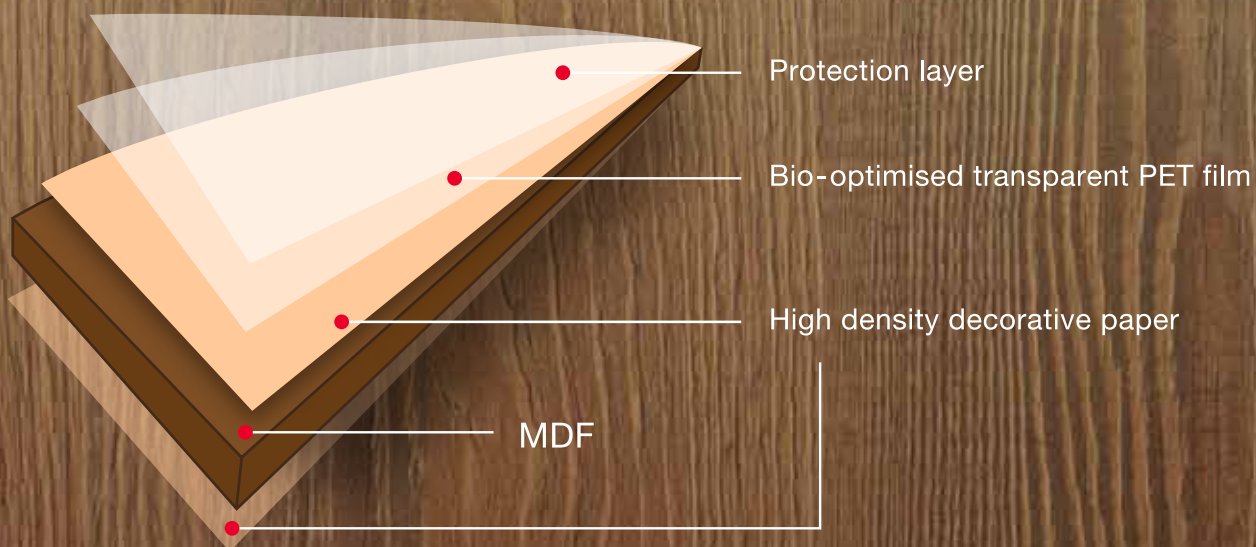
We are always inspired from nature while creating new materials.



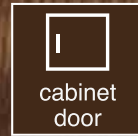
# WHAT IS *polylac* ?

Polylac is an ecological multi-layered decorative panel, with the highest scratch and heat resistance on the market. It also has the highest gloss level in the industry with a mirror like reflection.

Polylac panel is made by pressing a high-density decorative paper to MDF. A specially developed bio-optimised transparent PET film is then laminated on the surface to protect it from external factors.



# *polylac* IS PERFECT FOR



## FEATURES

- 100% **PVC free**,
- High gloss with mirror like finish,
- Scratch, stain & heat **resistant**,
- Smooth surface and **depth effect**,
- Cuts without cracking or chipping,
- **Very easy** to clean and maintain,
- Elegant European designs,
- Matching acrylic and ABS edge tape,
- Two-toned brushed aluminum with color edge tape.





# WHY *polylac* ?

In the decorative panel industry, high gloss levels are easy to achieve, however higher the gloss, the lower the scratch resistance. Whereas Polylac, through extensive testing, has proved superior levels of glossiness while maintaining a very high scratch resistance.

Other panels might crack and chip during manufacturing process. Whereas Polylac, due to its flexible PET film, will not crack or chip, thus facilitating the edge banding process.

Polylac panels retain their original state without denting, chipping or cracking; while most of the other products deteriorate in time. **Making Polylac the ideal sustainable material for all your needs.**



## Group 1: SOLID COLORS

Polylac panel dimensions (mm): 18 x 1220 x 2800 / 08 x 1220 x 2800

Matching edgebanding: ABS, acrylic, two-toned acrylic



9511

9520

9525

9527

9530

9540

9545

9570

## Group 2: WOOD GRAIN COLORS

Polylac panel dimensions (mm): 18 x 1220 x 2800 / 08 x 1220 x 2800

Matching edgebanding: ABS, acrylic, two-toned acrylic



9110

9111

9112

9120

9121

9122

9130

9131

9132

9140

9141

9142

9150

9151

9152

9160

9161

9162

9170

9171

9172

### Group 3: FANCY COLORS

Polylac panel dimensions (mm): 18 x 1220 x 2800

Matching edgebanding: ABS



9210



9211



9212



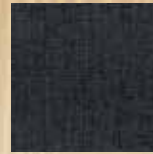
9220



9221



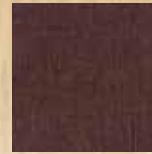
9222



9230



9231



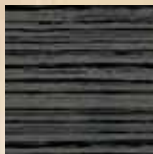
9232



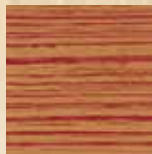
9251



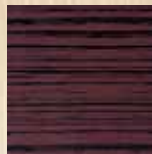
9252



9253



9254



9255



9256



9257



9258



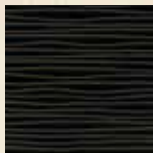
9259



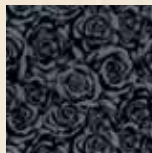
9260



9261



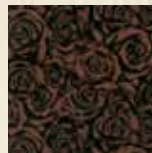
9262



9263



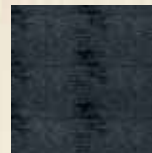
9264



9265



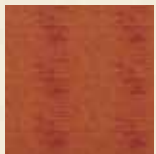
9266



9267



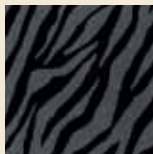
9268



9269



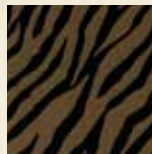
9270



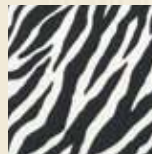
9271



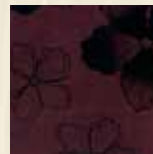
9272



9273



9274



9275



9276



9277



9278



9279



9280



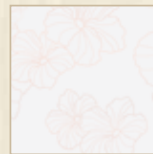
9281



9282



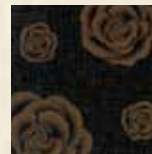
9283



9284



9285



9286



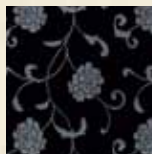
9287



9288



9289



9290



9291



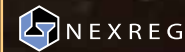
| No | FEATURE   | RESULT                   | STANDARD           |
|----|---|--------------------------|--------------------|
| 1  | Gloss level (60° angle)   | 99 GU                    | EN 14323 part 5.13 |
| 2  | Scratch resistance  | 3,0 Newton (Class 4B)    | DIN 68861 part 4   |
| 3  | Assessment of surface resistance to wet heat (100°C)  | 5 (No change)            | EN 12721:09        |
| 4  | Assessment of surface resistance to dry heat (140°C)  | 5 (No change)            | EN 12722:09        |
| 5  | Surface abrasion resistance   | 4500 rev. (Class 4)      | EN 14323 cls. 5.9  |
| 6  | Behavior towards impact loading by falling steel ball   | No Cracking              | EN 14323 cls. 5.14 |
| 7  | Test of water steam resistance  | 5 (No change)            | EN 14323 cls. 5.11 |
| 8  | Resistance to staining  | 5 (No change)            | EN 14323 cls. 5.6  |
| 9  | Assessment of surface resistance to chemical cold liquids (Acetic acid, acetone, ammonia solution, citric acid, cleaning agent, etc.) | 5 (No change)            | EN 12720:10        |
| 10 | Colorfastness to light  | 4 / 5. Grade             | EN 15187           |
| 11 | Bending strength (*)  | 32 N / mm <sup>2</sup>   | EN 310             |
| 12 | Modulus of elasticity in bending (*)  | 4441 N / mm <sup>2</sup> | EN 310             |
| 13 | Surface soundness (tensile strength) (*)  | 1,36 N / mm <sup>2</sup> | EN 311             |
| 14 | Tensile strength vertical to the surface (*)  | 0,54 N / mm <sup>2</sup> | EN 319             |
| 15 | Thickness tolerance   | ± 0,5 mm                 | Gizir              |
| 16 | Bow tolerance   | 2,2 mm / 1 m             | Gizir              |
| 17 | Cold check (40 cycles, 1 h 60°C, 15 min. room temp., 1 h - 30°C, 15 min. room temp.)  | No damage                | TSE                |

- (\*) These values are weighted average of the test results.

- Above test results (1, 3, 4, 5, 6, 7, 8, 10, 11, 12, 13, 14) are made by TÜV Rheinland; 2, 9 and 17 are made by TSE.



Please contact your sales representative for FSC® product.



gizir.com

info@gizir.com

**İSTANBUL**  
Export office & Showroom

İkitelli OSB Mh. Deparko San. Sit., Hürriyet Bulv.,  
Deparko Plaza, No: 2/4 34490 İkitelli | İstanbul

T. +90 (212) 670 40 07

**ADANA**  
Headquarters

Organize Sanayi Bölgesi, Çanakkale Cad.  
No: 17 01350 Sarıçam | Adana

T. +90 (322) 394 43 40 (Pbx)