

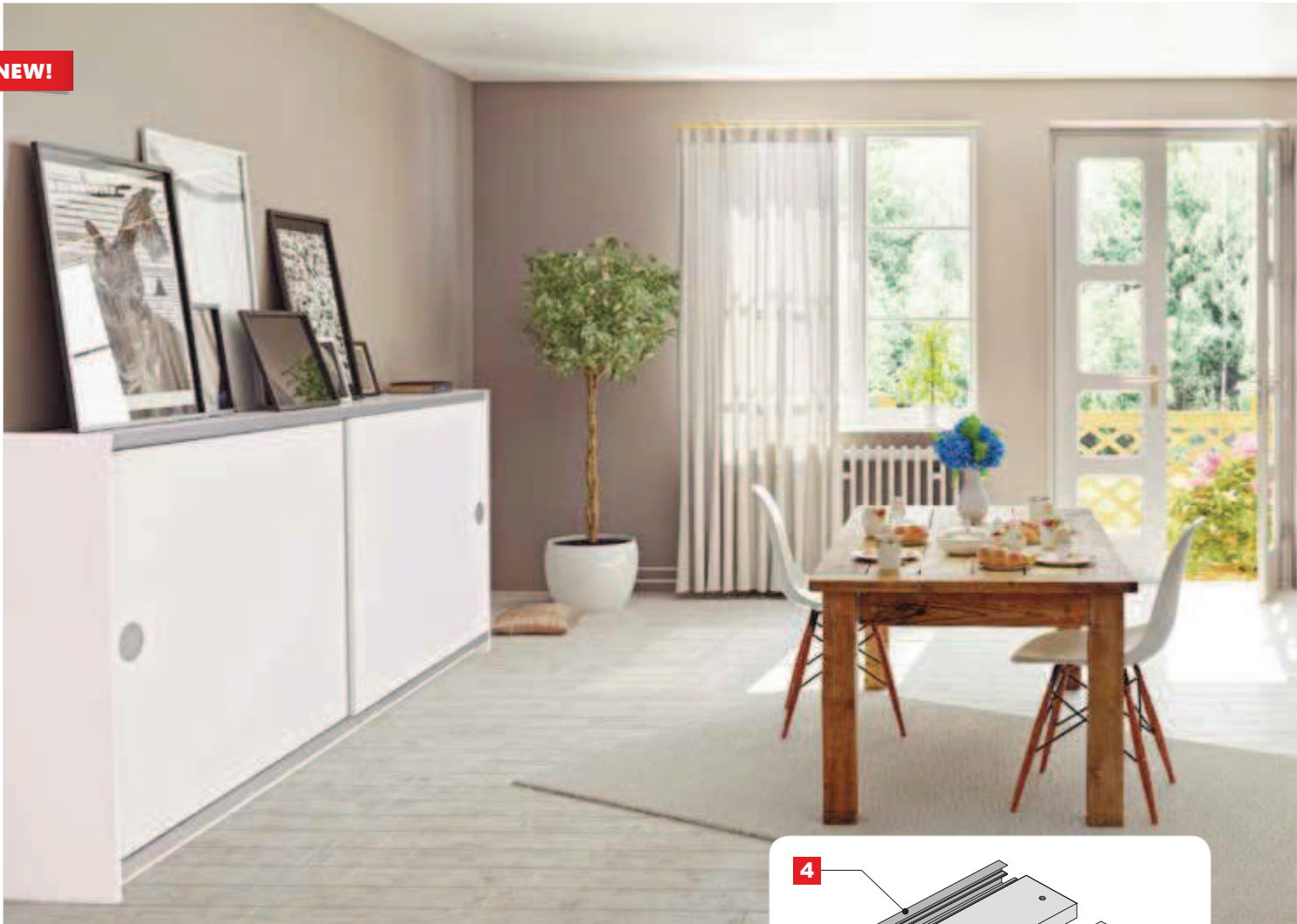


COMPACT



Twin track sliding doors with bottom carriage system

NEW!

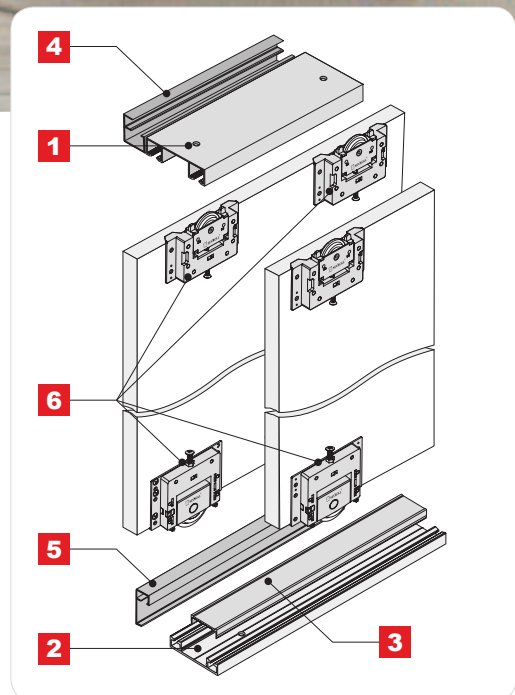


CHARACTERISTICS

▶ Application	Sliding doors
▶ Track	Twin
▶ Carriage system	Bottom
▶ Top guide	Ball bearing carriage
▶ Bottom guide	Ball bearing carriage (load bearing)
▶ Construction	Board
▶ Filling	Board 16 or 18 mm
▶ Max. door load	50 kg
▶ Max. handle length	n/a
▶ Max. track length	6000 mm
▶ Textile door stops	n/a
▶ Anti-dust brushes	n/a
▶ Sales programme	Components can be purchased separately
▶ Decorative profile programme	n/a

USAGE

- ▶ Cabinet furniture, standing wardrobes





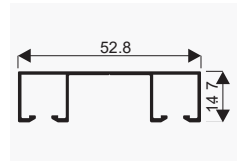
Basic system components

Top track **COMPACT**

1



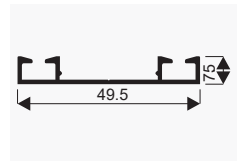
CODE	COLOUR	LENGTH (mm)	COLLECTIVE PACKAGING	PRICED PER	NET PRICE
04395	SILVER	1700	12	item	
04396	SILVER	2350	12	item	
04578	SILVER	3000	12	item	
04579	SILVER	6000	12	item	

Bottom track **COMPACT**

2



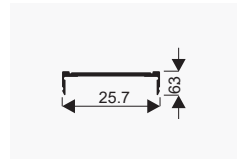
CODE	COLOUR	LENGTH (mm)	COLLECTIVE PACKAGING	PRICED PER	NET PRICE
04393	SILVER	1700	12	item	
04394	SILVER	2350	12	item	
04576	SILVER	3000	12	item	
04577	SILVER	6000	12	item	

Finishing profile
for bottom track **CLEFT**

3



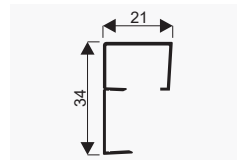
CODE	COLOUR	LENGTH (mm)	COLLECTIVE PACKAGING	PRICED PER	NET PRICE
04072	SILVER	1700	48	item	
04073	SILVER	2350	48	item	
04074	SILVER	3000	48	item	
04076	SILVER	6000	48	item	

Top track masking profile
COMPACT

4



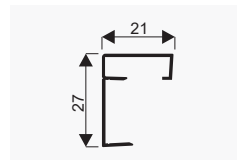
CODE	COLOUR	LENGTH (mm)	COLLECTIVE PACKAGING	PRICED PER	NET PRICE
04397	SILVER	1700	24	item	
04398	SILVER	2350	24	item	
04580	SILVER	3000	24	item	
04581	SILVER	6000	24	item	

Bottom track masking profile
COMPACT

5

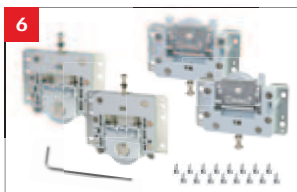


CODE	COLOUR	LENGTH (mm)	COLLECTIVE PACKAGING	PRICED PER	NET PRICE
04582	SILVER	1700		item	
04583	SILVER	2350		item	
04584	SILVER	3000		item	
04585	SILVER	6000		item	



Soft-Close **COMPACT**
 Set includes 2 soft-closers


CODE	COLLECTIVE PACKAGING	PRICED PER	NET PRICE
20347	50	set	

Set **COMPACT**

SET CODE	10215	
DESCRIPTION	for 1 wing	COLLECTIVE PACKAGING
Top carriage COMPACT	2 pcs	20 sets
Bottom carriage COMPACT	2 pcs	
Allen key 2 mm	1 pc.	
Screw Ø4x14	16 pcs	
	NET PRICE	



COMPACT is an **exclusive** system for free-standing wardrobes

The main advantage of this system is its compact modern appearance blending perfectly with today's trends: barely visible tracks, and a vast array of 18 mm board variety, can be mated with our aluminum handle profiles, or with smaller inserted handles.

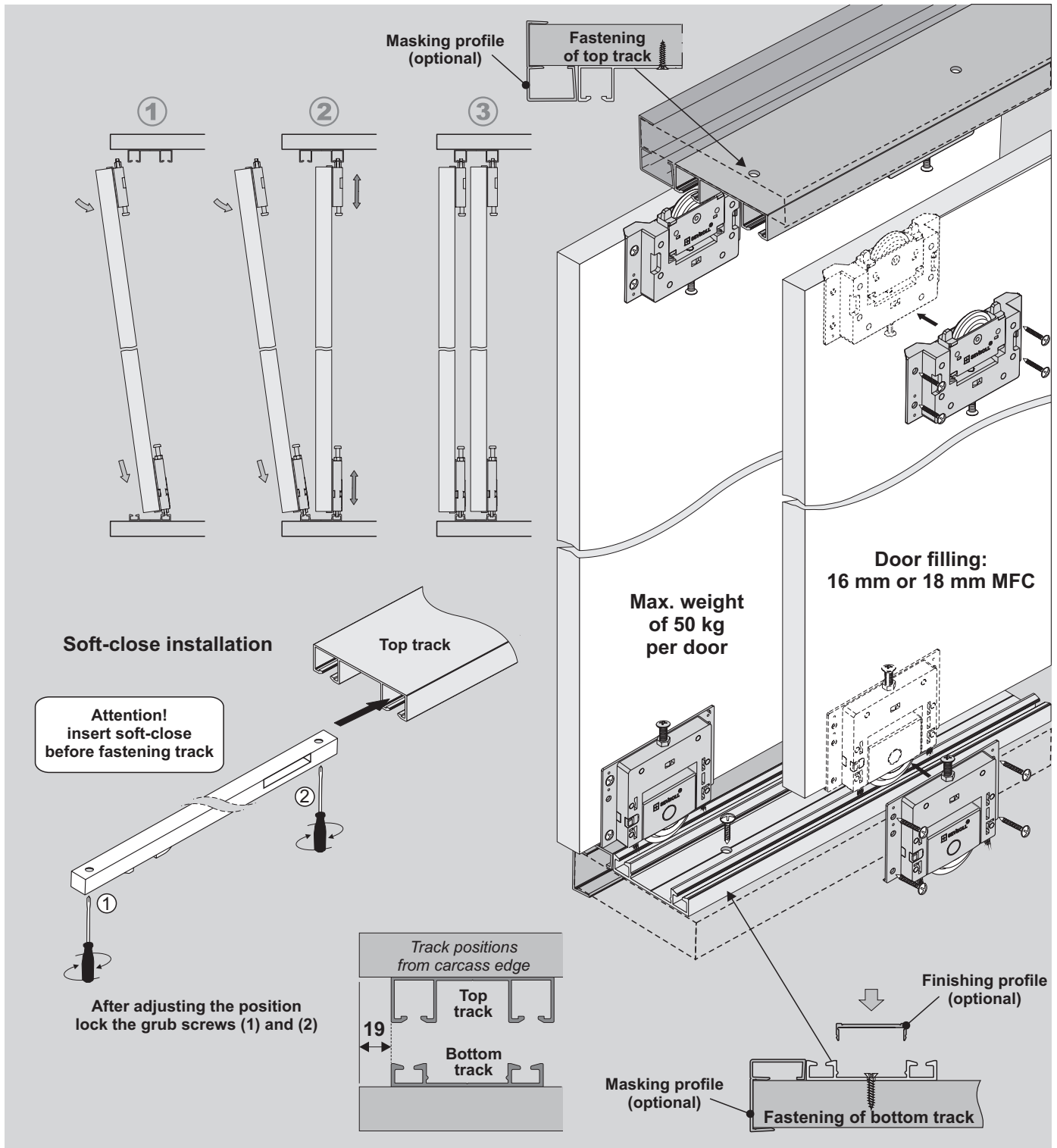
What most distinguishes COMPACT from other systems is soft-closers hidden within the top track. Track masking profiles that wrap around the carcass front – removing the need for edging on the top and bottom of the carcass.

Utilising our Finishing profile, which sits flush, also masks the screws securing the lower track. This gives the impression that all 3 lower profile elements are 1!

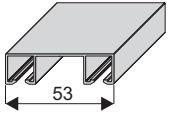
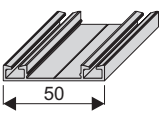
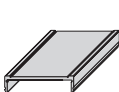


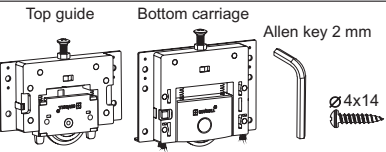

Top guides and bottom carriages are quipped with locking mechanisms, this greatly improves the ease of door installation and removal. Innovatively, the bottom carriages sweep the track just ahead of the rollers. This ensures a silent glide and extends carriage lifespan.



System Compact



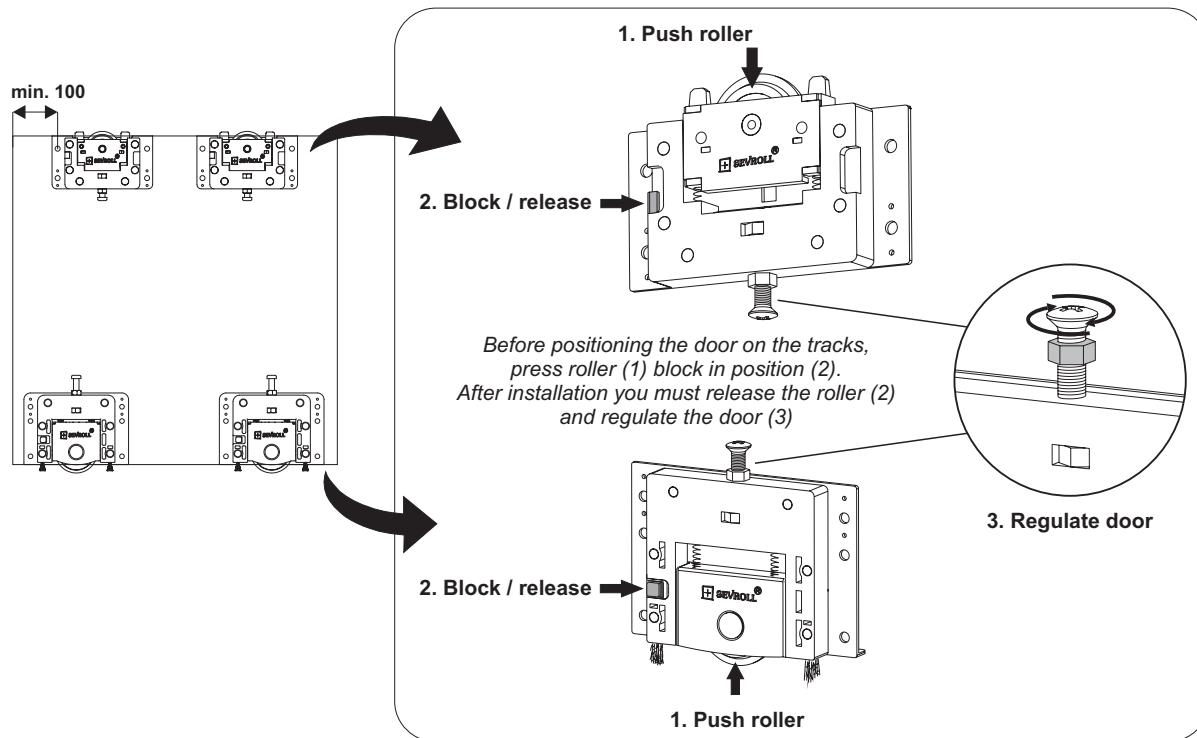
COMPONENTS

<p>Top track Compact</p>  <p>53</p>	<p>Bottom track Compact</p>  <p>50</p>	<p>Finishing profile for bottom track Cleft</p> 	<p>Top track masking profile</p> 	<p>Bottom track masking profile</p> 	<p>Set Compact (1 door)</p> <p>Top guide x2</p> <p>Bottom carriage x2</p> <p>Allen key 2 mm x1</p> <p>Ø4x14 x16</p> 	<p>Soft-close Compact</p>  <p>x2</p>
---	--	--	---	--	---	--

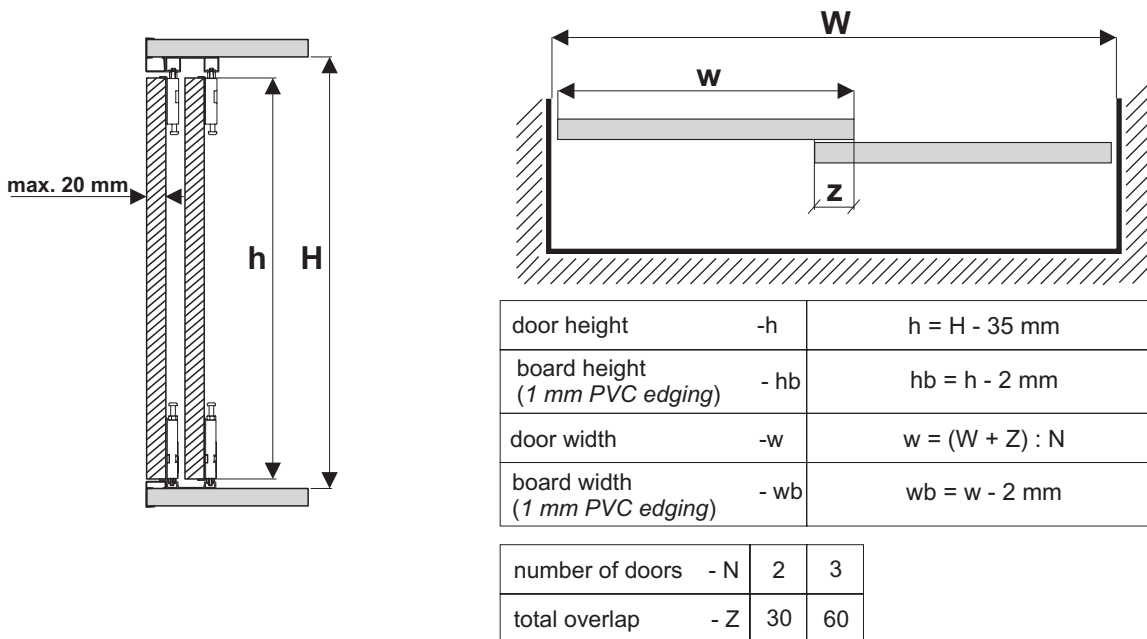
Length:
1.7 m, 2.35 m, 3.0 m, 6.0 m



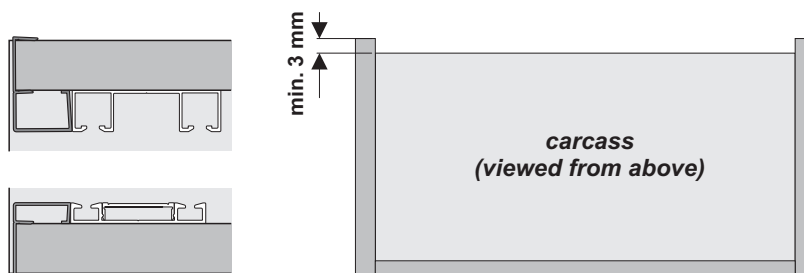
1. Door installation



Dimensions of opening



Warning! When using masking profiles carcass sides should protrude a min. of 3 mm



ATTENTION!

Remove protective film from aluminium elements (handles, tracks, connectors, etc.) prior to cutting them to the desired size. Film removal will reveal quality issues (eg. scratches)